



PROSPECTUS
2024 NWS Member Exhibition
ONLINE Virtual Exhibition
 May 1, 2024 – June 30, 2024
\$10,000 in CASH
 Three - \$2000 Awards
 Two - \$1000 Awards
 Four - \$500 Awards

Exhibition Calendar

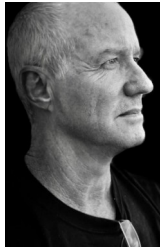
Jan 1- Feb 23, 2024	Entries accepted at https://www.callforentry.org/
February 23, 2024	Entry deadline – 12:00 Noon, Pacific Time Zone
March 19, 2024	List of Accepted Artists posted on NWS website <i>(NWS only contacts accepted artists)</i>
May 1-June 30, 2024	Exhibition Dates
May 4, 2024	Virtual Reception via Zoom

Artists are responsible for monitoring their email and NWS website for postings.

PLEASE READ THIS PROSPECTUS CAREFULLY

Failure to meet ANY of the NWS rules shall result in the disqualification of your entry, forfeiture of any awards, and suspension from all NWS exhibitions for a minimum of two (2) years.

Larry Moore
Juror of Selection & Awards



Larry Moore has been a professional visual communicator for the past 45 years, working in graphic design, advertising, illustration, and fine art, and achieving national recognition for his work in each of these areas. He has worked professionally in a variety of mediums, oil, watercolor, gouache, pastel and acrylic. He has been a college and workshop instructor since 1990 and has published a successful book on creativity for artists titled "Fishing for Elephants: Insights and Exercises to Inspire Authentic Creativity." Larry has won numerous awards while participating in plein air events around the country and for illustration and design while participating in regional and national creative arts industry competitions.

LarryMooreStudios.com

ARTWORK REQUIREMENTS:

1. Open to all **Active NWS Members**. *2024 NWS Membership annual dues must be paid prior to entry.* If you are not currently a member please join as an Associate Member by going to the NWS website: www.nationalwatercolorociety.org
2. Artists must be 18 years or older.
3. Artists may enter two (2) paintings; only 1 painting per artist is eligible for acceptance into the exhibition.
4. **All entries must have been created after 1/1/2021 and not previously shown in any NWS Exhibition.**
5. Painting must be watermedia paintings on natural or synthetic paper Yupo, Aquabond and Claybord. No stretched canvas or canvas board. Collage may be used but aqueous medium must constitute 80% or more of the work. All collage materials must be original designs executed on watermedia paper, by the artist.
6. Digital media, photography, prints, and reproductions are not permitted.
7. Your entry must be original and not derived from published images; artist's own idea, composition, and design (not computer generated), nor done in a class. Photo reference material must have been taken by you.
8. 2D Artwork image size; No minimum or maximum size for this online-virtual exhibition.
9. Accepted artwork may not be displayed or offered for sale in another exhibition *(physical or virtual)* from May 1 - June 30, 2024.

Entry, Fees, Sales & Rules

SUBMISSION: Artwork can only be submitted online via CaFE. If you do not already have an account, [click here](#) to create your CaFE account. *Note: NWS Membership required prior to entry.*

CaFE Specs / file type-jpeg or jpg / 1200 pixels or greater on longest side / max 5M. (You can use Pixlr.com to resize online for free). [Click here for direct CaFE entry link](#) / [Click here for CaFE Tips.](#)

FEES, SALES & LIABILITY:

- Entry fee is \$45 for 1 image / \$55 for 2 images *(All entry fees are non-refundable without exceptions)*
- NWS is responsible for all sales and will retain a 30% commission for exhibition sales. Also, NWS is due a 30% commission on "presold" paintings-those sold before the exhibition opens.
- Artwork may be marked NFS in this exhibit. No price changes will be allowed after an entry is submitted.
- Permission is granted to reproduce the painting in promotion of the exhibition and to use this image for educational and publicity purposes.
- Attention International Artists: NWS wants to make sure you receive all proceeds, including awards. NWS will provide all documents and tax forms necessary.
- This Exhibition does not qualify for NWS Signature status.
- Monetary awards remaining unclaimed by 12/1/2024 will be forfeited.

AGREEMENT / CONDITIONS & RULES:

Failure to meet ANY of the conditions may result in the disqualification of your entry and may result in ineligibility to enter any future NWS exhibitions for a minimum of two (2) years and forfeit of any awards.

1. Submission to this exhibition shall constitute an Agreement on the part of the artist to comply with the conditions set forth in this Prospectus.
2. If my artwork is selected and it does not meet eligibility requirements set forth in the prospectus, I will be disqualified. Accepted entries may not be withdrawn by the artist.

For general questions about the exhibition and/or entry, contact: Annie Strack at Exhibition@NationalWatercolorSociety.org
Please submit early, so we can assist you with any technical issues that may arise in the entry process.